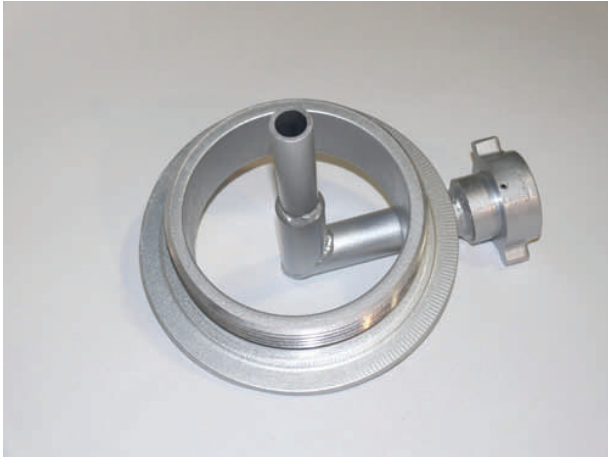


POWER JET SIPHON



The Power Jet Siphon is designed for use with two or more Fol-Da-Tanks. The siphon connects to a hard suction hose and assists the transfer of water from one tank to another. This keeps the main tank full of water for drafting as the secondary tank is refilled. The construction features include: durable al-mag alloy, aircraft quality tubing and 1 1/2" female assist by 4" - 6" discharge couplings. Standard threads are NST with other threads available. Storz and cam fittings are available upon request. NFA 1142 compliant.

<u>PART NO.</u>	<u>SIZE</u>	<u>APPROX. FLOW RATE</u>
PJS 2.5	2.5"	
PJS 4.0	4"	350 GPM
PJS 4.5	4.5"	450 GPM
PJS 5.0	5"	550 GPM
PJS 6.0	6"	650 GPM

*Flow rates are based on using a 1/2" nozzle on a 1.5" hose. In addition to the estimated flow through the suction hose an additional 50-150 GPM can flow from the 1.5" transfer line.

Call for pricing.



FOL-DA-TANK COMPANY
P.O. BOX 110
MILAN, IL. 61264

WWW.FOL-DA-TANK.COM